

201/8 Sydenham Street Moonee Ponds VIC

2 2 1

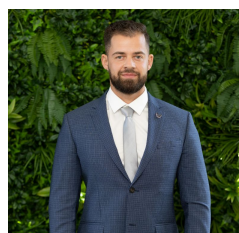
Sydenham is a boutique residence of only 16 apartments. This near new two-bedroom, two-bathroom residence features high-end finishes, spacious balcony, car space and a storage cage.

Perfectly positioned with a one minute walk to Puckle Street shopping precinct and Moonee Ponds train station and a short stroll to Queens Park, Maribyrnong River, Moonee Valley Racing Club and Highpoint Shopping Centre.

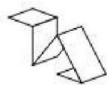
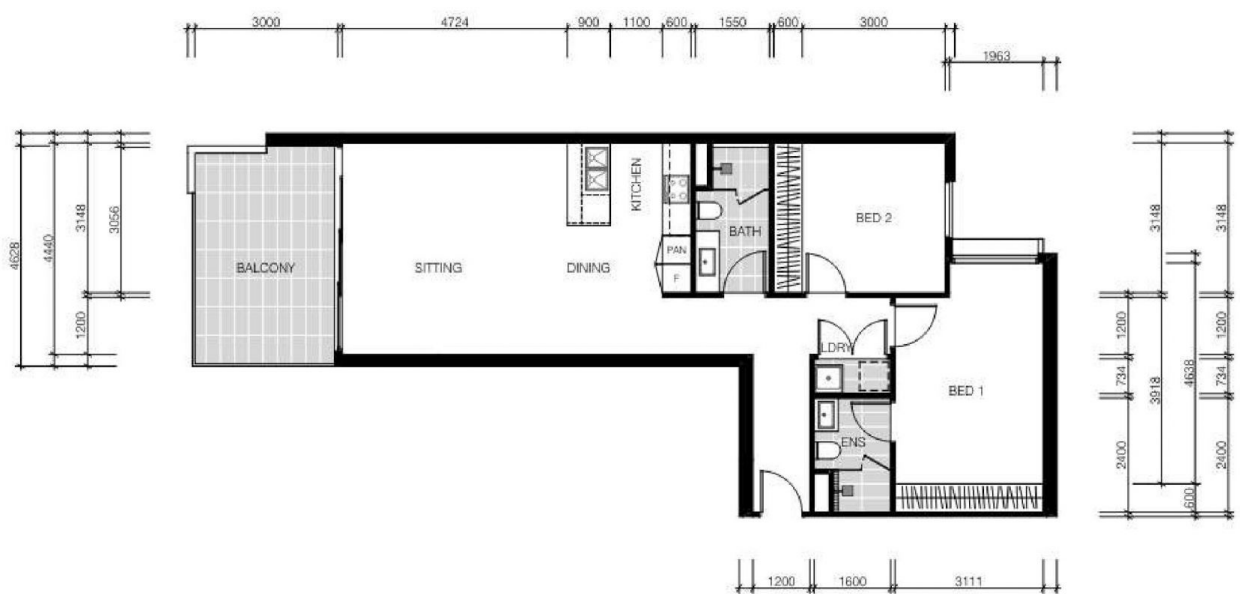
The property has a built in fridge, electric blinds, stone bench tops and all SMEG appliances.

This is a must see!
[For full version visit the website](https://www.jmre.com.au/lease/vic/north/moonee-ponds/residential/apartment/8037365)

Type : Apartment
View : <https://www.jmre.com.au/lease/vic/north/moonee-ponds/residential/apartment/8037365>



Armando Giacon
03 9328 2002



TAOUKARCHITECTS

APARTMENT 10

LEVEL	LEVEL 2
FLOOR AREA	87.02 m ²
BALCONY (TOTAL)	11.76 m ²



8A SYDENHAM STREET,
MOONEE PONDS

ALL DRAWINGS, LAYOUTS AND AREA CALCULATIONS ARE INDICATIVE ONLY AND ARE SUBJECT TO APPROVAL BY THE RELEVANT AUTHORITIES AND ALTERATIONS DUE TO DESIGN DEVELOPMENT. DRAWINGS ARE NOT TO BE USED FOR CONSTRUCTION. ALL APARTMENT AND BALCONY AREAS ARE CALCULATED AS GROSS FLOOR AREA IN ACCORDANCE WITH THE METHOD OF MEASUREMENT FOR RESIDENTIAL PROPERTY AS PUBLISHED BY THE PROPERTY COUNCIL OF AUSTRALIA.