

5/48 Evans Street Moonee Ponds VIC

2 1 1

Boasting size and convenience this newly renovated ground floor apartment features;

- Partly furnished which includes couches, bed frame & side tables
- Huge living room with split system heating/cooling
- Brand new kitchen/meals area with ample cupboard and preparation space
- 2 generously sized bedrooms (with BIR's)
- A central bathroom including laundry facilities
- Separate toilet
- Undercover car space

Situated close to all local amenities including the popular Moonee Valley Racecourse, parks, walking/bike track and

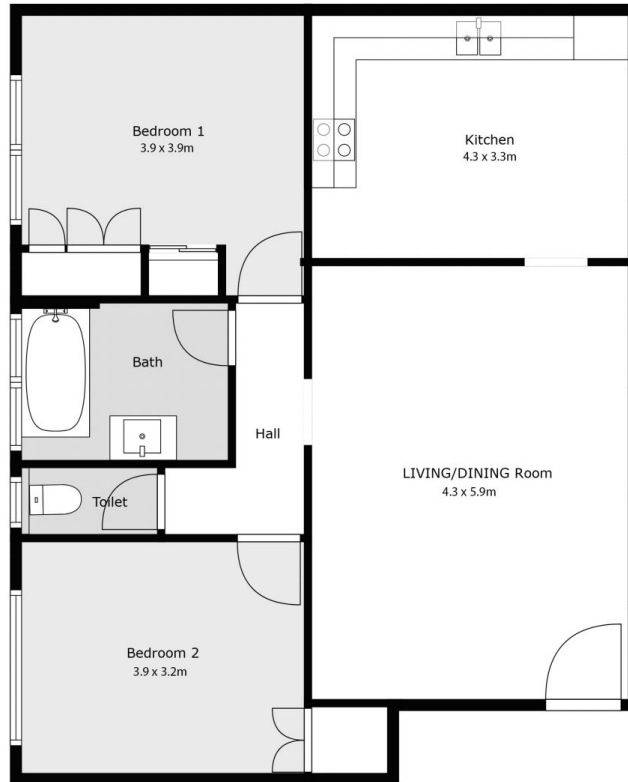
Type : Apartment

View : <https://www.jmre.com.au/lease/vic/north/moonee-ponds/residential/apartment/8101389>



Molly Bradshaw
03 9328 2002

[For full version visit the website](https://www.jmre.com.au)



TOTAL: 79 m2

Floor Plan Created By Cubicasa App. Measurements Deemed Highly Reliable But Not Guaranteed.