



31/30 Chetwynd Street West Melbourne VIC

2 1 1

Dramatic street scapes and sunsets complement the dynamic design of this generous contemporary apartment, ideally positioned to enjoy North Melbourne's cafes and the complete convenience of city access.

The top floor property features;

- Large open plan living/dining area
- Central kitchen with Bosch and Blanco appliances
- Two bedrooms with built in robes, each room with direct access to rear 2nd balcony
- Bathroom with shower over bath
- Balcony overlooking Eades Park

Type : Apartment

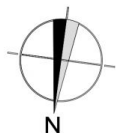
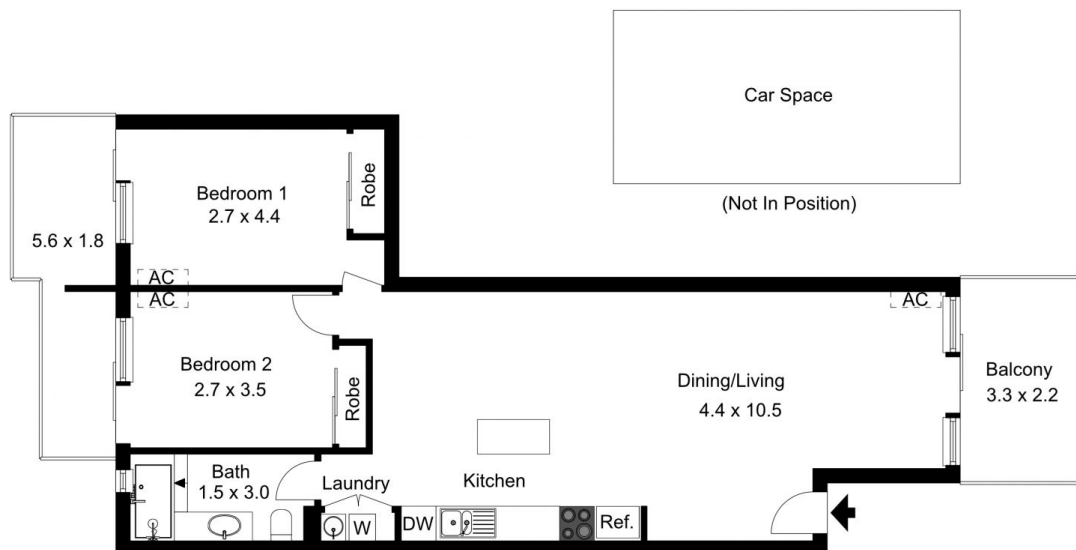
View : <https://www.jmre.com.au/lease/vic/inner-city/west-melbourne/residential/apartment/8118759>



Molly Bradshaw
03 9328 2002

[For full version visit the website](https://www.jmre.com.au)

<https://www.jmre.com.au>



The floor plan is not to scale; measurements are indicative and in metres. Exterior elements are not in position. Plans should not be relied on. Interested parties should make and rely on their own enquiries.

Produced by **DIAKRIT**



The floor plan is not to scale; measurements are indicative and in metres. All features included in this 3D plan are for inspiration purposes only. This is not an exact replica of the property or the position of exterior elements. Plans should not be relied on. Interested parties should make and rely on their own enquiries.

Produced by **DIAKRIT**