



**401/16 Anderson Street West Melbourne VIC**

2 1 1

Welcome to the Journal Building, nestled in the vibrant suburb of West Melbourne. With public transport right at your doorstep, you'll have quick and easy access to everything the city has to offer. Enjoy the convenience of nearby Errol Street's cafes and shops, as well as fresh produce from Queen Victoria Market, all within walking distance. This fourth-floor apartment, with sweeping northwesterly views, is perfect for first-home buyers and investors, offering a rare opportunity in a tucked-away corner of the city.

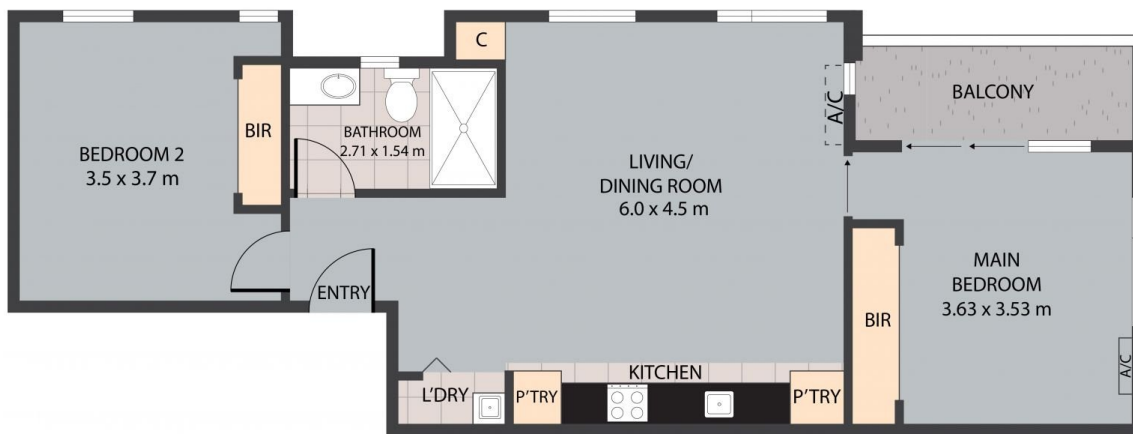
Features include two spacious bedrooms with built-in robes (BIR), one titled car space, and a light-filled open-plan layout enhanced by quality timber flooring. The living and dining area flows seamlessly into an expansive balcony,

[For full version visit the website](https://www.jmre.com.au)

**Type** : Apartment  
**Price** : \$500,000 - \$550,000  
**Building Size** : 60 sqm  
**View** : <https://www.jmre.com.au/sale/vic/inner-city/west-melbourne/residential/apartment/8168466>



**Jmre A Smartre Agency**  
03 9328 2002



401/16 Anderson Street, West Melbourne, VIC, 3003

TOTAL APPROX. FLOOR AREA 60 SQ.M

Whilst every attempt has been made to ensure the accuracy of the floor plan contained here, measurements of doors, windows, rooms and any other items are approximate and no responsibility is taken for any error, omission, or misstatement. This plan is for illustrative purposes only and should be used as such by any prospective purchaser.